

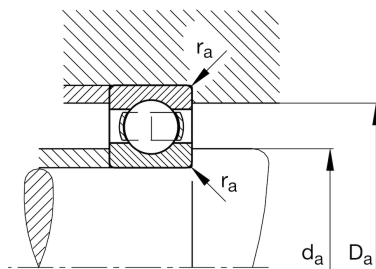
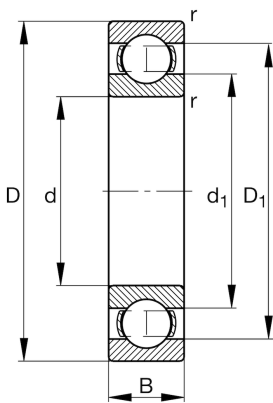
FAG

6014-M

Deep groove ball bearing

Schaeffler ID:
0190938530000Deep groove ball bearing 60..-M, single
row, solid brass cage

Technical information

**Main Dimensions & Performance Data**

d	70 mm	Bore diameter
D	110 mm	Outside diameter
B	20 mm	Width
C_r	40.500 N	Basic dynamic load rating, radial
C_{0r}	31.000 N	Basic static load rating, radial
C_{ur}	1.900 N	Fatigue load limit, radial
n_G	11.200 1/min	Limiting speed
n_{gr}	6.800 1/min	Reference speed
	0,709 kg	Weight

Dimensions

r_{min}	1,1 mm	Minimum chamfer dimension
D_1	97,3 mm	Shoulder diameter outer ring
d_1	82,8 mm	Shoulder diameter inner ring

Mounting dimensions

$d_{a min}$	76 mm	Minimum diameter shaft shoulder
$D_{a max}$	104 mm	Maximum diameter of housing shoulder
$r_{a max}$	1 mm	Maximum fillet radius

Calculation factors

f_0	15,6	Calculation factor
-------	------	--------------------

Temperature range

T_{min}	-30 °C	Operating temperature min.
T_{max}	150 °C	Operating temperature max.